

Towne's Harvest Garden

& Community Supported Agriculture Program

Annual Report

2015



Report written by: Alison Harmon, Kara Landolfi, Charles Holt & Janet Gamble

Towne's Harvest Advisors:

Alison Harmon, Department of Health and Human Development
Bill Dyer, Department of Plant Sciences and Plant Pathology
Mac Burgess, Department of Plant Sciences and Plant Pathology
Bruce Maxwell, Department of Land Resources and Environmental Sciences
David Baumbauer, Horticulture Farm Manager
Janet Gamble, Department of Health and Human Development

Towne's Harvest 2015 Managers:

Charles Holt, Production Manager
Kara Landolfi, Marketing and Operations Manager
Madeline Kelly, Assistant Marketing Manager

2015 Practicum Students: Mac Burgess (Instructor)

Camrey Bradshaw	Damion Lynn	David Steinberg
Debra Kraner	Emilia Hitchcock	Jaime-Rae Base
Kendall Ranks	Luke Vest	Tiffany Eccleston
Tommy Ward	Mariah Stone (CFT Intern)	

For more information about Towne's Harvest, please visit:

<http://www.townesharvest.montana.edu>

Or contact:

Alison Harmon, PhD RD LN
Interim Dean for the College of Education, Health and Human Development
Associate Professor of Foods and Nutrition; Sustainable Food Systems Department of Health and Human Development
250 Reid
Montana State University
Bozeman MT 59717
Phone: 406-994-6338
Fax: 406-994-6314
e-mail: harmon@montana.edu
web : <http://www.montana.edu/wwwhhd/>

Copyright 2015 Montana State University

Photographs courtesy of Alison Harmon, Charles Holt, Kara Landolfi & Janet Gamble

Table of Contents

Executive Summary..... 4

Our Story: About Towne's Harvest Garden 5
 Mission, Vision & Values..... 6

Organization & Schedule 7

Production Layout..... 8
 Harvest Data 9

Income and Expense Summary 10
 Community Supported Agriculture Program 11
 Campus Farm Stand 13
 Community Food Truck 14
 Wholesale Summary 15

President's Luncheon..... 16
 THG Practicum..... 17
 Montana Dietetic Internship..... 18

Public Recognition..... 19
 Research..... 20
 Activities, Tours & Events 21

Appendix..... 22
 Expenses
 Harvest Data
 CSA Distribution Logs
 CSA Information Packet
 CSA Flyer
 Student Summer CSA Flyer
 Campus Farm Stand Flyer
 Community Food Truck Flyer
 Garden Starter Package Information
 Sample CSA Newsletter
 PSA's



Executive Summary

Towne's Harvest Garden (THG) is a project that was initiated by the MSU Friends of Local Foods Student Organization. Friends of Local Foods was formed in the fall of 2006 to bring a diverse group of students and faculty together to raise awareness about local foods and to encourage sustainable lifestyles on campus and in the community. Since that first year of production, Towne's Harvest has become a cornerstone of the Sustainable Food & Bioenergy Systems Bachelor's Degree Program. Additionally, Towne's Harvest operates as a Community Supported Farm, distributing produce to CSA members, patrons of the MSU Campus Farm Stand, MSU students, and residents of nearby rural communities via the Community Food Truck. The mission of Towne's Harvest is to be a source of locally, sustainably, and educationally grown food for the campus and members of the surrounding community.

Towne's Harvest Garden completed its 9th production season in 2015. Many characteristics remained the same, but several notable changes also occurred. A major production alteration occurred in the sense that Professor Mac Burgess and Ph.D. candidate David Baumbauer provided additional crops from their season extension research. This year our field crops were primarily irrigated by hand line, as opposed to drip line which has been used in the past.

Additionally, several market alterations were made. Notably, we reduced the length of our Summer CSA from 14 to 12 weeks. Our intentions were to include more monetary value the last few weeks by increasing the quantity of storage crops distributed. We also provided more Student Summer CSA Shares at a discounted price, discontinued our Friday Student Produce Deal in exchange for offering a discounted Student Deal at our Campus Farm Stand, began selling flower bouquets at our Campus Farm Stand, and chose to focus on just two locations for the Community Food Truck (Belgrade and MSU Family and Graduate Housing).

This year we also received a grant to pay for the purchase and installation of a new stainless steel wash and prep station for our produce.

Direct costs this year added up to **\$14,630.32** (excluding salaries) and our total income was **\$33,268.90**.



Our Story

Towne's Harvest Garden (THG) was envisioned and initiated by Friends of Local Foods (FLF), a student organization at Montana State University. In 2006, with the help of faculty, FLF produced vegetables on 2 acres of land at MSU's Horticulture Farm. A partnership with the Gallatin Valley Food Bank enabled the success of the garden. Over the years, THG has increased in size (now 3 acres), structures (2 hoop houses and 1 heated greenhouse), partners, direct participants, associated staff, agricultural output, monetary revenue, and market expansion.

2015 marked our 9th growing season at THG. A student-led effort has become integral to the Sustainable Food and Bioenergy Systems degree program at MSU. These SFBS students (10-25 students/season) enroll in a summer-long practicum at THG to learn the basics of vegetable production and marketing. Additionally, THG has become incorporated into other programs, such as the Montana Dietetic Internship and an MSU Culinary Marketing course. Our markets now include a ~50 person Community Supported Agriculture (CSA) program, a farm stand located on the MSU campus, the Community Food Truck supplying low-access populations with discounted produce, and wholesale markets.

Over the years we have worked closely with Montana State University, the Sustainable Food and Bioenergy Systems degree program, the Department of Health and Human Development, the College of Agriculture (the Department of Land Resources and Environmental Sciences and the Department of Plant Sciences and Plant Pathology), the Horticulture Farm, the Gallatin Valley Food Bank, AARP, and many more.

We have found that Towne's Harvest Garden has been extremely valuable to many people and organizations over the years. Some of our most basic, highlighted attributes can boil down to these benefits that THG plays an active role:

- Educational tool
- Demonstration of sustainable agriculture and local food systems
- Interdisciplinary collaboration
- Student recruitment
- Campus and community outreach



Mission, Vision & Values

Towne's Harvest Garden Mission: *To offer interdisciplinary education opportunities, be an outdoor classroom for SFBS, and a source of locally, sustainably, and educationally grown food for the campus and members of the surrounding community.*

The Towne's Harvest Vision:

- + That Towne's Harvest will be a valuable and permanent part of MSU that is enthusiastically supported by the administration.
- + That Towne's is interdisciplinary center of education for any MSU department and is integrated into MSU as a classroom, research laboratory, and source of good food for the campus community.
- + That Towne's inspires students from diverse backgrounds to become involved in sustainable food production and consumption.
- + That Towne's continues to diversify crop production to include a large variety of vegetables, fruits, and animals.
- + That Towne's strengthens community food security in Bozeman and the surrounding area, increasing access to fresh nutritious produce for all.
- + That Friends of Local Foods remains a strong and active supporting student organization.
- + That Towne's continue to address all aspects of sustainability including ecology, economic viability, and social justice.



Organization & Schedule

Involved	Role	Responsibilities
Alison Harmon	EHHD	Supervises Marketing & MDI
Bill Dyer	PSPP	Supervises Production
Bruce Maxwell	LRES	Oversees research
Carmen Byker Shanks	HHD	Culinary Marketing Instructor, Oversees research
Patrick Hatfield	ANRS	Oversees research
David Baumbauer	COA	Horticulture Farm Manager
Mac Burgess	PSPP	Practicum Instructor
Chaz Holt	Production Manager	Production
Kara Landolfi	Marketing Manager	Markets and CSA
Janet Gamble	HHD	Supervises Marketing, Culinary Marketing Instructor
Lindsay Ganong	MDI	MDI Supervisor
Practicum Students	SFBS	Field work, market assistance
Culinary Marketing Students		Field work, market assistance, President's Lunch
MDI Interns		Field work, market assistance
Gal Valley Food Bank		Community Food Truck partner
Madeline Kelly	Asst. Marketing Mgr.	Processing produce, Markets

Daily Events	Monday	Tuesday	Wednesday	Thursday	Friday	Weekend
Morning	Chores	Chores	Chores	Chores	Chores	Chores
Work Shift	8am-noon Student field work	1-5pm Student field work	8am-noon Student field work	1-5pm Student field work	12-3pm Friday Lunch Class	
Market		2-7pm Community Food Truck	4-630pm CSA Distribution	3-6pm Campus Farm Stand		
Evening	Chores	Chores	Chores	Chores	Chores	Chores

This schedule represents an average week during the summer when all markets were operating. Daily and weekly schedules varied throughout the season.

Production Layout

2015 'plan'		160'				South	160'								
110'	Block 1	Row	Crop				Block 2	Row	Crop						
		1					4/21	1	cilantro done 6/8						
		2						2	salad mix and cilantro done 6/10					replant	
		3	BUCKWHEAT FOR BINDWEED						3	arugula and mizzuna 7/9 lettuce and pok choi 6/10					replant
		4					5/18	4	swiss chard						
		5						5	fava beans						
		6						6	daikon and spinach					replant	
		7						7	beets						
	5/20	8	Beans		animal failures			8	head lettuce					replant	
		9	beets cylinrica					9	kohlrabi						
		10	bolero					10	broccoli						
		11	bolero					11	cauliflower						
		12	bolero					6/1	12	spinach and radish and red spinach					
		13	sugarsnax					6/1	13	salad mix					
		14	red and purple carrtos					6/1	14	beets					
5/5	15	Peas times 4 beds of 2		failure			15								
WELL							160'								
110'	Block 3						Block 4	Row	Crop						
	6/10	1	Carrots												
		2	Carrots bolero												
	5/18	3	Leeks												
		4	Leeks												
		5													
	5/15	6	Potato	Fingerlin											
		7	Potato												
		8	Potato	Fingerling											
		9	Potato	All Blue											
		10	Potato							Oats	23-Apr				
		11	Potato	All Blue						Berseem					
		12	Potato	Yukon								grazed 6/25			
		13	Potato												
		14	Potato									grazed 7/30			
		15	Potato	Yukon											
		16		P Viking											
		17		Norland											
		18													
	19		Norland							resown to fall cover research 8/25					
160'							160'								
100'	Block 5	Row	Crop				Block 6	Row	Crop						
	7/8	1	Green beans					1	pie pumpkin				plastic		
		2	Sugarsnax					2	Pumpkins				plastic		
		3	Beets					3	pie pumpkin				plastic		
		4	Cilanto and Dill					4	pumpkins				plastic		
		5						5	acorn				plastic		
		6	Radish				5/25	6	Cantaloupe				plastic		
		7	salad mix		spinach			7	Tomatoes				plastic		
		8						8	Tomatillos and Peppers				plastic		
		9	spinach					9	zucchini\						
	8/5	10	tatsoi					10	Squash						
		11	tatsoi					11	cucumber						
	8/5	12	kale					12	cucumber						
		13	kale				6/10	13	Beans	purple					
	7/8	14	Beets					14	Beans	green					
	7/8	15	Spinach and Radish					15	Beans	yellow					
	7/8	16	Cucumbers					16	Peas						
		17													
	18	Peas													
Diverse Bulk Crop															
		Garlic													
	Onions*2	450 plants per row = 900 per bed													
	Onions*2	5-May													
	Onions*2														
	Onions*2														
	Cabbage	18-May													
	Corn	7-Jun													
	Corn														
	Corn														
	Corn														
	Corn														
						North									

Harvest Data

+ 21,850 pounds of produce harvested

60+ plant varieties

2.4 acres in production

0.5 acre in cover crop

3 high tunnels

+ 215 dozen eggs collected



Income and Expense Summary

This year Towne's Harvest Garden participated in a Community Supported Agriculture program, a Campus Farm Stand on the Montana State University campus (including a reduced priced Student Deal), a reduce-priced, low-access market (Community Food Truck), u-pick opportunities, and wholesale transactions.

2015 THG Income Summary	Total Sales
Community Supported Agriculture	\$22,258.48
Campus Farm Stand	\$6,861.82
Community Food Truck	\$1,397.67
Wholesale	\$1,970.92
CSA Market Sales	\$780.01
TOTAL 2015 Income	\$33,268.90

2014 THG Expenses	Amounts
Administration	\$1,867.90
Capitol Investment	\$707.07
Community Food Truck	\$84.50
Equipment Repairs/Fuel	\$2752.57
Facility Rental	\$3128.92
Marketing	\$886.40
Production Supplies	\$5,202.96
Total Expenses	\$14,630.32

*Managerial salaries not included

Community Supported Agriculture

Our Community Supported Agriculture (CSA) program consisted of several parts this year. CSA Shares included:

- Garden Starter Package
- Spring Greens Share
- Full Season Share
- Full Season Convenience Option*
- Summer Share
- Student Summer Share*
- Summer Share Convenience Option**



+ Shares were made available for purchase via PayPal or direct mail at the beginning of March. Information was available on <http://townesharvest.montana.edu>. Advertisements were conducted through email, Facebook, flyers hung up on campus, public service announcements (PSAs) on the local college radio station KGLT, additional Bozeman area event websites, Craigslist, and word of mouth.

+ Our CSA distributions were at the THG barn. The Marketing Manager and two students would arrange the distribution as a market style, with produce set out on tables, with signs labeling the crop and the quantity allocated to each share. Each week the distribution was on Wednesdays from 4-6:30pm.

*The Convenience Options were continued after implementing last season. These shares were delivered to campus on Thursdays between 3-6pm for an additional fee. For the first seven weeks shares were delivered to members' offices. For the remaining 11 weeks, members came to the Campus Farm Stand to pick up their share.

**Also continued from last season, we offered a student priced summer CSA share. This was an \$85 discount for college students interested in joining our farm for the season, receiving the same share as other Summer CSA Share members.

+ Each week an email was sent to all members as a reminder for the CSA distribution. Included in the email was a weekly newsletter providing recent news, names of produce provided, and recipe ideas.

- + **Garden Starter Package** (\$55)
 - o ~25 organic vegetable and herb plant starts and 8 packets of organic vegetable seeds (enough to plant 10'x16') – distributed May 29th
 - o 25 packages purchased (limited to 40)

- + **Spring Greens CSA Share** (\$165; \$27.50 value/week)
 - o 6 weeks CSA pickup on farm (May 27-July 1)
 - o First part of Full Season CSA Share
 - o 25 Shares (limited to 25)
 - 6 Spring Greens Shares only
 - 17 Full Season Shares (Spring and Summer Share combo)
 - 2 Full Season Shares - Convenience Option



- + **Summer CSA Share** (\$385; \$27.50 value/week average, the last few weeks were ~\$40 to make up the difference)
 - o 12 week [*14 week equivalent] CSA pickup on farm (July 8-Sept 23)
 - o Second part of Full Season CSA Share
 - o 51 Shares (limited to 65)
 - 11 Summer Shares only (1 free for MSU EHHD Dean)
 - 1 Summer Shares – Convenience Option (\$415)
 - 17 Full Season Shares (\$540 - Spring and Summer Share)
 - 2 Full Season Shares – Convenience Option (\$580)
 - 20 Student Summer Shares (\$300 – reduced price for students)

Share Option	Price	Shares	Duration	Total Sales
Garden Starter Package	\$55.00	25	~60 starts	\$1,331.30
Spring Greens	\$165.00	25	6 weeks	\$964.55
Summer Share only	\$385.00	11	12 weeks*	\$4131.77
Summer Share Convenience Option	\$415.00	1	12 weeks*	\$402.66
Summer Student Share	\$300.00	18	12 weeks*	\$5,838.00
Full Season	\$540.00	16	18 weeks*	\$8,464.44
Full Season Convenience Option	\$580.00	2	18 weeks*	\$1,125.76
Sales at Distribution	\$274.95			\$780.01
Total Sales				\$23,038.49

Campus Farm Stand

The Campus Farm Stand (CFS) was our second longest enduring market, after our CSA program. For 13 weeks (from July 9-Oct 1, with one market cancelled due to weather), the Marketing manager and two students would set up a tent and tables with décor and produce just south of MSU’s Student Union Building (SUB) on Thursdays from 3-6pm. Signs with arrows were placed on street corners directing traffic to the stand. Additionally, advertisements for the CFS were conducted through PSAs on KGLT, submissions to several online and print event calendars, flyers hung up around campus, emails, and word of mouth.



This was the most profitable year we have had for the CFS. Six of our markets broke our longstanding \$500 market record, with our last market breaking \$1,000. This can be explained by a number of reasons including: more awareness, greater customer retention, and greater diversity, quantity and quality of produce offered.

*As a requirement of MSU’s NUTR221 Basic Human Nutrition course, ~400 students were assigned to visit the CFS to ask any question about THG or local produce. This drew a large number of students’ attention to the presence of an on-campus farm stand.

*Trialed this year was a weekly Student Deal (~\$11 produce), which was an assortment of abundant produce purchased together for \$7, providing a \$4-5 discount. This idea was an attempt to promote students to purchase and consume fresh, local produce. Approximately 30 students took advantage of the offering throughout the summer.

Campus Farm Stand Stats	
Number of Markets	12
High Market Sales	\$1,266.46
Low Market Sales	\$311.32
Average Market Sales	\$571.82
Total Sales	\$6,861.82

Community Food Truck

This was the Community Food Truck’s (CFT) fourth operating season (excluding its pilot season). The AARP grant that initially supported the project expired. Thus, as the second year without external funding, it was crucial to continue to measure the project’s impact and sustainability. Partnership with the Gallatin Valley Food Bank allowed for the use of the vehicle and vehicle maintenance. A gift from donors paid for a portion of staff time to distribute food through the CFT.

The CFT traveled to two locations this year (down from four) to try and increase reliability and awareness. Locations included Belgrade (Clarkin Park in front of Lee and Dad’s Grocery) and MSU Family & Graduate Housing (in the parking lot west of their office). Each Tuesday from July 14-September 22 the CFT set up a market display at the two locations. From 2-4pm the CFT was set up in Belgrade, and from 5-7pm was set up at MSU.

Produce was priced and sold at half the price marketed at our Campus Farm Stand. Additional partnership with the WIC office led to 23% (\$190) of our sales made using \$5 WIC Farmers’ Market Nutrition Program vouchers.

Community Food Truck Stats	
Number of Locations	2
Days Operated	11
Number of Markets	23
High Market Sales (MSU)	\$100.39
Low Market Sales (Belgrade)	\$11.50
Average Market Sales	\$60.77
Total Sales	\$1,397.67
Community Food Truck Expenses	\$84.50



Wholesale Summary

Wholesale	Amount
Culinary Marketing Course	\$48.48
Market Day Foods	\$330.50
Montana Dietetic Internship	\$657.79
MSU Affiliates	\$504.15
Preseason Egg Sales	\$186.00
Roots Cannery	\$154.00
Other	\$90.00
Total Sales	\$1,970.92



President's Luncheon

The **9 students** in MSU's SFBS 445R/541 Culinary Marketing Farm to Table course catered our President's Lunch at the end of July. Students utilized produce they helped harvest from THG, for a seasonally inspired menu. Approximately 70 individuals attended the luncheon. The lunch was served buffet style, and held in the tree grove at THG.

The Culinary Marketing students also participated in taste testing and market desirability tests during their time at THG.



Towne's Harvest Garden 8th Annual President's Lunch

July 24, 2015

11:30am-1pm



Program

Welcome & Introductions

Menu Overview

New at Towne's Harvest Garden in 2015

Sustainable Food & Bioenergy Systems

Degree Program Update

Tour of Towne's Harvest Garden

Today's Menu

Buttermilk Rolls

Fresh Butter: Sage and Honey, Garlic Thyme

Chilled and Curried Zucchini Soup

Towne's Summer Vegetable Barley Salad

Glazed and Braised Root Vegetables

Crisp Farmhouse Pickles

Herbed Summer Prittata

Zuccheba Quiche

Montana Mint and Basil Pound Cake

Western Squash Pudding Bars

Berry Basil Lemonade

Cucumber Mint Cooler

THG Practicum

The SFBS 296 Practicum had **10 practicum students** in 2015. All were enrolled at MSU in the SFBS program. Students were split into two groups, with shifts from 8am-noon on Monday and Wednesday, or 1-5pm on Tuesday and Thursday. All students attended a Friday session from noon-3pm, which included lunch prepared by students and the practicum instructor.

The Friday lunch provided a chance for students to share their experiences from the week. Coordinated lessons and guest speakers were also scheduled to provide more academic lessons for the whole group. Topic examples included: native pollinators, honey bee production, soil science, grain production, compost economics and farm startup experiences.

Additionally, students were responsible for conducting an independent research project at THG during the summer. Example projects included water usage, compost creation, chicken tending, and sweet corn production. During a Horticulture Farm field day the students presented their results to attendees.

Practicum students were also responsible for assisting the Marketing Manager preparing produce and working at CSA distribution and the Campus Farm Stand.

One of the last days of the semester the Practicum students and Culinary Marketing students also help a wood oven pizza party to celebrate the end of the summer.



Montana Dietetic Internship

The Montana Dietetic Internship has a Sustainable Food System concentration. At the beginning of their internship, **20 interns** each have a two-week rotation at Towne's Harvest Garden, learning the intricacies within our local food system, along with basic vegetable production and harvesting skills, produce handling, marketing, and distribution of THG produce. Additionally, interns cooked lunch for their group every day using produce they harvested from THG. Three, two-week rotations (of 7, 7 and 6 interns) were seen at THG. Each rotation took produce to cook with, preserve, and prepare a larger meal for extended faculty and staff or other group to expand on their experience and knowledge they took from THG.



Public Recognition

MSU students grow and sell organic produce at summer stand

Video slot on local news station.

<http://www.kpax.com/story/29573154/msu-students-grow-and-sell-organic-produce-at-summer-stand>

Another local news station video slot on Campus Farm Stand.

<http://www.kbzk.com/video>

CHOPPED!

Wellness article written based on THG CSA share produce.

<http://montanamovesandmeals.com/2015/07/29/chopped/>

MSU Extension in Gallatin County offers canning workshops Aug. 26 and Sept. 9

THG produce was utilized.

<http://www.montana.edu/news/15683/msu-extension-in-gallatin-county-offers-canning-workshops-aug-26-and-sept-9>



Research

Research at Towne's Harvest Garden

- + Mac Burgess, PhD. Specialty Crop Block Grant funded research on vegetable variety evaluation. Test 10 varieties each of yellow storage onions, green romaine lettuce, carrots, green beans, and cucumbers.
- + Kelly Kjorlien Undergraduate Scholars Program (Mac Burgess, Advisor). What Is The Best Cover Crop for Organic Vegetable Growers in Montana.
- + Charles Holt, M.S. candidate. Studying the comparisons between mowing or grazing cover crops and the relationships between weed densities to multiple species of vegetable crops and their marketable yield.
- + Tony Hartshorn, PhD. Soil research looking at carbon emissions, timing and volume, from different compost mixtures incorporated into the soils; introductory soils lab class uses THG for observing soil attributes in the valley such as type, depth, and structure.
- + Casey Delphia, PhD. Entomology research assessing the effects of native flowering plants potential to draw in or create habitat for native pollinator species on vegetable crop yields.
- + Sean McKenzie, M.S. candidate. Studying the comparisons between mowing or grazing cover crops and the relationships to beetle populations, soil temperature, soil moisture, weed diversities, weed densities.
- + Greg Johnson, PhD. Studied livestock/veterinary entomology.



Activities, Tours & Events

At the beginning of the Practicum, all students and main THG staff participated in a team building activity including a ropes course. The exercises aided in the group's overall rapport for the summer. Additionally, everyone broke into groups and prepared lunch items to share. This activity has been planned to continue in the future to help introduce students at the beginning of the season. Additionally, a private Facebook group was created to allow the Practicum students a resource to communicate and plan events with each other.

Scheduled tours were held throughout the summer to any group or individual. For example, tours were provided at the annual President's Luncheon, for the "Little Explorers" preschool group, and additional MSU stakeholders and potential donors.

At the start of the Fall Semester, the Friends of Local Foods student club hosted a Welcome Back Hoedown at the farm. An estimated 75 people came to the potluck/wood oven pizza making party with live music performed by students in the SFBS program.



Appendix

Expenses..... 23

Harvest Data 25

CSA Distribution Logs 26

CSA Information Packet..... 28

CSA Flyer 33

Student Summer CSA Flyer 34

Campus Farm Stand Flyer 35

Community Food Truck Flyer 36

Garden Starter Package Information ... 37

Sample CSA Newsletter..... 38

PSA's 42



Appendix – Expenses

2015 THG Expenses					
Date	Location	Amount	Payment Form	Category	Details
1/6/15	Murdoch's	215.96	Chaz P Card	Production Supplies	poultry netting, clothes
1/25/15	Murdoch's	43.99	Chaz P Card	Production Supplies	Poultry water
1/23/15	Murdoch's	107.22	Chaz P Card	Production Supplies	Feed and tools
1/26/15	Peaco	369.50	Invoice- Lynn	Production Supplies	Organic Soil
1/14/15	Johnny's	1337.39	Invoice- Lynn	Production Supplies	Seeds
2/16/15	Murdoch's	59.96	Chaz P Card	Production Supplies	Feed
2/12/15	Lowe's	154.48	Chaz P Card	Capitol Investment	Shopvac and floor tape
2/26/15	Moses	40.09	Chaz P Card	Administration	Text book
3/6/15	Staples	52.55	Chaz P Card	Administration	Paper stuff
3/9/15	Murdoch's	84.43	Chaz P Card	Production Supplies	Feed and sprinkler
3/18/15	Lowe's	35.73	Chaz P Card	Production Supplies	stakes
18-Mar	Territorial Seed Co	201.05		Production Supplies	Cover crop seed
2/10/15	PGC	99.67	Invoice- Lynn	Facility Rental	Greenhouse rental
3/30/15	Murdoch's	62.98	Chaz P Card	Production Supplies	Feed
4/8/15	Owenhouse Ace	42.50	Chaz P Card	Production Supplies	Tools and supplies
4/9/15	Owenhouse Ace	9.14	Chaz P Card	Production Supplies	Hardware
4/13/15	FedEx Kinkos	33.00	Alison P Card	Marketing	60 CSA posters
13-Apr	Owenhouse Ace	80.93	Chaz P Card	Production Supplies	Seed and fertilizer
2-Apr	Johnny's	8.25	Chaz P Card	Production Supplies	Seed
20-Apr	Murdoch's	62.46	Chaz P Card	Production Supplies	Feed and seed
23-Apr	Justin Fuher	192.50	Check 1455	Production Supplies	15 Laying hens 1 rooster
14-Apr	Owenhouse Ace	14.98	Chaz P Card	Administration	Markers
20-Apr	Owenhouse Ace	23.07	Chaz P Card	Production Supplies	Tools
23-Apr	Murdoch's	113.92	Chaz P Card	Production Supplies	Grass stuff and Feed
4-May	Kimm's Organic Potatoes	305.00	Invoice- Lynn	Production Supplies	Seed Potatoes
15-Jan	Justin Fuher	500.00	Check	Production Supplies	40 Laying Hens
7-May	Justin Fuher	90.00	Check	Production Supplies	10 Laying Hens
13-May	Hoss	121.93	Chaz P Card	Production Supplies	Tools
8-May	Pump N Pak	37.01	Chaz P Card	Equipment Repairs/F	Gas - farm truck
8-May	4imprint	437.74	Chaz P Card	Marketing	CSA reusable totes
14-May	Indiana Berry	84.65	Chaz P Card	Marketing	berry containers
21-May	Bridger Analytical Lab	56.00	Chaz P Card	Administration	Water test
21-May	Murdoch's	107.71	Chaz P Card	Production Supplies	Feed and supplies
21-May	Casey's Corner	10.25	Chaz P Card	Equipment Repairs/F	Fuel
22-May	Home Depot	38.06	Chaz P Card	Marketing	Marketing baskets
27-May	Home Depot	71.76	Chaz P Card	Capitol Investment	Harvesting totes
25-May	Casey's Corner	25.06	Chaz P Card	Equipment Repairs/F	Fuel
1-Jun	Little Stinkers	45.75	Invoice- Lynn	Facility Rental	Hand wash station
4-Jun	Gallatin Vally Gardeners Club	84.00	1458 Check	Production Supplies	Rhubarb
5-Jun	Murdoch's	47.97	Chaz P Card	Production Supplies	Feed
5-Jun	Home Depot	98.67	Chaz P Card	Capitol Investment	Harvesting totes
11-Jun	FedEx Kinkos	16.50	Chaz P Card	CFT	CFT posters 30
24-Jun	Murdoch's	60.96	Check 1459	Production Supplies	Feed
6-Jul	Target	17.94	Chaz P Card	Administration	Soap and towels
6-Jul	Staples	16.28	Chaz P Card	Marketing	Rubber bands
6-Jul	Home Depot	16.65	Chaz P Card	Administration	Light blubs and guard
1-Jul	Little Stinkers	61.00	Invoice- Lynn	Facility Rental	Hand wash station
1-Jul	Johnny's	97.65	Chaz P Card	Production Supplies	Seed
13-Jul	Murdoch's	60.96	Chaz P Card	Production Supplies	Feed
1-Jul	MT Dept of Ag	430.75	Invoice- Lynn	Marketing	Organic Inspection Fee
20-Jul	Target	15.95	Chaz P Card	Administration	Markers and towels
15-Jul	MT Ag Exper Station	1704.00	Invoice- Lynn	Facility Rental	Field Plot, High Tunnels, Tractor Time
30-Jul	Murdoch's	72.93	Chaz P Card	Production Supplies	Feed and tools

Appendix – Expenses Cont.

20-Jul	Casey's Corner	39.91	Chaz P Card	Equipment Repairs/F	Fuel
7-Aug	Home Depot	146.00	Chaz P Card	Capitol Investment	2 Picnic Tables
3-Aug	Little Stinkers	30.50	Invoice- Lynn	Facility Rental	Hand wash station
11-Aug	Town Pump	68.00	Chaz P Card	CFT	Fuel
14-Aug	Target	26.96	Chaz P Card	Administration	Towels
14-Aug	Home Depot	13.36	Chaz P Card	Marketing	Buckets
14-Aug	Town & Country	12.51	Chaz P Card	Marketing	Jars for flowers
10-Aug	MT Ag Exper Station	250.00	Invoice- Lynn	Facility Rental	Road dust application
19-Aug	Town & Country	12.51	Chaz P Card	Marketing	Jars for flowers
19-Aug	Home Depot	63.76	Chaz P Card	Capitol Investment	Harvesting totes
19-Aug	Murdoch's	47.97	Chaz P Card	Production Supplies	Feed
4-Sep	Murdoch's	47.97	Check 1461	Production Supplies	Feed
23-Jul	MT Party Rentals	265.00	Chaz P Card	Facility Rental	President's Lunch tables and chairs
6-Jul	FedEx Kinkos	33.00	Chaz P Card	Marketing	CFS posters 60
9-Mar	Johnny's	143.65	Chaz P Card	Production Supplies	Seed
7-Jul	Amazon	34.84	Chaz P Card	Marketing	bags
7-Jul	Amazon	27.50	Chaz P Card	Marketing	bags
17-Jul	Vistaprint	78.40	Chaz P Card	Marketing	4 CFS yard signs
11-Sep	Amazon	28.00	Chaz P Card	Marketing	produce bags
16-Sep	Staples	101.05	Chaz P Card	Administration	Chaz ink and paper
11-Sep	Interwest Tire Factory	38.00	Chaz Reimburse	Equipment Repairs/F	Tire replacement
21-Sep	Owenhouse Ace	43.33	Chaz P Card	Production Supplies	Tool holder and hardware
25-Sep	Murdoch's	47.97	Chaz P Card	Production Supplies	Feed
29-Sep	Town Pump	13.34	Chaz P Card	Equipment Repairs/F	Fuel
14-Oct	Kenyon Noble	172.40	Chaz P Card	Capitol Investment	Saw horses and supplies
15-Oct	Montana Stinking Rose	240.00	Check 1460	Production Supplies	Garlic seed
13-Oct	Murdoch's	31.98	Chaz P Card	Production Supplies	Feed
2-Nov	Little Stinkers	61.00	Lynn	Facility Rental	Hand wash station
4-Nov	MT Ag Exper Station	490.00	Invoice- Lynn	Facility Rental	Tractor time 24.5hr
11-Dec	Bozeman Transmission Center	2589.00	Invoice- Lynn	Equipment Repairs/F	Rebuilt transmission for farm truck
Sept	Little Stinkers	61.00	Invoice- Lynn	Facility Rental	Hand wash station
Oct	Little Stinkers	61.00	Invoice- Lynn	Facility Rental	Hand wash station
MSU fiscal year	MT Hall internal expense	1525.73	paid monthly	Administration	Internal assessment-admin fee
January 2016	MT Dept of Ag	-394.20	Reimbursement	Marketing	2015 Cost Share reimbursement
2015	TOTAL EXPENSES	14630.32			

Appendix – Harvest Data

THG 2015 growing season					
Began Harvest 2nd week in May and continued through first week of October in fresh crop					
			Weight/Amount	location	1st date recorded in harvest
Arugula			36.11	HT 3	29-Jun
Baby beets			57	HT 4	23-Jun
Baby Carrots			21		
Basil			22	HT 4	23-Jun
Beets			667	HT 3	4-Jun
Braising greens			12		7-Jun
Broccoli			52.5 lb/oz	HT 4	19-May
Cabbage, Red			517	Field	17-Aug
Cantaloupe			48		2-Sep
Carrots	sugarsnax bolero		447.11		
	purple		160		
Cauliflower			75		24-Aug
Chard			155	Field	6-Jul
Chives			18		
Cilantro			31	Field	16-Jun
Collard Greens			26	HT 3	2-Jun
Cucumbers			201		30-Jul
Dill			27.12		
Fava Beans			116.14		13-Jul
Garlic			168		21-Jul
Garlic Scapes			19.8		9-Jul
Green Bean	green, yellow, & purple		192		2-Aug
Green Onions			84.8		22-Jun
Green Tomatoes			79.5		16-Sep
Head Lettu Romaine			237.88	Field	7-Jun
Kale	Red		179	HT 4	5/19/05
	Green		63		
Kohlrabi	Red and Green		498		15-Jul
Leeks			223.4		17-Aug
Mint			19	Field	
Mizzuna			31.13	HT 4	29-Jun
Mustards	Red		42.14	HT 4	19-May
Onions			3122	with greens field	10-Aug
Parsley			2		20-Jul
Peppers			130	field	30-Jul
Pok Choi, Bok Choi			43.9		2-Jun
Potatoes			3602	average 225/row	11-Aug
Radish			234	Field	16-Jun
	Daikon		74.9	HT 3	26-May
Radish seed pods			12.2		21-Jul
Raspberry			41.75	6 oz ea pint	20-Jul
Salad Mix			165.3	HT 3	26-May
Snap Peas			18.2	Field	1-Jul failure
Sorrel			29.8		15-May
Spinach	caramel and tyee		197.6	Field	7-Jun
	red		32.8	HT 4	5/19/15
strawberries			8		23-Jun failure
Summer squash			1374		9-Jul
Sweet Corn			2006	8.5#/doz 236doz	2-Sep
Tatsoi			134		15-Jul
Tomatoes, Cherry and Slicing			989		21-Jul
Tomatillos			84		28-Aug
Winter Squash			5020		3-Sep
			21848.08		
				By August 1st, approx.2500# harvested	
Eggs		Dozen			
January					
February					
March					
April					Began the laying year with 55 hens
May		79.5			finished with 30
June		84			
July		51			
August					
September					
October					
November					
December					

Appendix – Spring Greens CSA Distributions

Spring Greens	27 shares	May 27 thru July 1st				
2015 Spring Greens CSA Distributions						
May 27th				June 17th		
Bag	\$5			1/2 doz Eggs		2
Eggs	4			salad mix		4
Salad with micro greens and kale	4.5			carrots	(SERP)	3.5
Red Kale	3			spinach		4
Daikon Radish	3			broccoli	(1/2 SERP)	4
Red Spinach	3			cilantro		3
Red Mustard	3			radish		2
Salad Turnip	(SERP)	3				\$22.50
Chives		2		(slight drop in offering due to redundancy issues in crop maturity)		
Broccoli		3		June 24th		
		\$28.50 plus \$5 in bag		1/2 eggs		2
				bunch onions		2.5
June 3rd				salad mix large		3.5
Collards		3		radish , lots		2
Broccoli Head	(SERP)	2		basil, lots		3
Baby Beets		3		carrots		3
Pok Choi -2		6		dill		2.5
Rhubarb		4		braise mix		6
Salad mix w/tatasoi		3		spinach		3
Sorrel		4		mint		2
Eggs		4				\$27.00
		\$29				
				July 1st		
June 10th				arugula		3.5
eggs		4		carrots	(SERP)	2.5
spinach		3.5		salads		4
Red Mustard		3		cilantro		2.5
Red Kale		3		1/2 eggs		2
Carrots	(SERP)	4		beets		4
Head Lettuce		3		spinach		4
Daikons		3		mizzuna		4
Braise Mix		3		breakfast radish		2
Beets	(SERP)	3				\$28.50
Red Spinach		2				
		\$31.50		TOTAL		\$172.00

Appendix – Summer CSA Distributions

2015 Summer CSA Distributions			
July 8th			August 26th
S. Chard		3	week 10
2 heads Lettuce		5	Tomatoes
Green onions		2	Green Beans
Arugula		3	Squash
Garlic scapes		2	Cabbage
red and green spinach		3.5	Onions
Mizzuna		3.5	Garlic
Beets		2.5	Carrots
Basil		2.5	S. Chard
		\$26.00	Dill
			Cucumbers
			Tomatillos
15-Jul			
Red Kohlrabi - 2		6	
swiss chard		3	September 2nd
dill		2	Cabbage
garlic scapes		2	Leeks
carrots (SERP)		3	Tomatoes
salad mix		3	Pepper
bunch onions		2	Fingerling Potatoes
red head lettuce		2.5	Winter Squash
summer squash		3	Salad Mix
beets w/greens		3.5	Sweet Corn
		\$30.50	Tomatillos
			Squash
July 22nd			Cucumber (SERP)
Summer Squash		2.5	Canteloupe
Kohlrabi		3	Parsley
Fava Beans		3.5	
Radish Pods		2	
green garlic		2	September 9th
green onions		2	Tatsoi
parsley		2	Potatoes
head lettuce		3	Tomatoes
Cucumber - 1		1	Egg Plant
		\$19.50	Spinach
			Garlic
July 29th			W. Squash
Egg plant (SERP)		3	Shallot
Tomatoes		3	Carrots
Kohlrabi		3	Onions
Garlic		2	Basil
Raspberries		3	S. Corn
Cucumbers (SERP)		3	Cucumber
Squash		2.5	
Carrots		3	
Parsley&Sage		2.5	
		\$25.00	
			September 16th
August 12th	HALF WAY		Onions
Tomatoes		3	
Squash		2.5	
Spinach		2.5	September 25th
Radish		2	Carrots
Green Beans		4	Beets
Cucumbers (SERP)		3	Potatoes
Onion		2	JackOLanterns
Parsley		2	W. Squash
Red Kale		3	Garlic
Carrots, purple		3.5	Onions
		\$28.50	Parsley
			Tomatoes
August 19th			S. Chard
Tomatoes		3	Black Radish
Squash		2	Jalapenos (SERP)
Leeks		3	Sweet Corn
Peppers		2	Rutabega
Kohlrabi		3	Salad turnips
Beets		2.5	
Potatoes		4	
Cilantro		2	
Basil (LOTS)		4.5	
Cucumbers		3	
Spinach		3	
		\$32.00	
			Summer CSA Total
			Full Season CSA TOTAL

Appendix – CSA Information Packet



Welcome to the 2015 season!

Thank you for your interest in supporting Towne's Harvest Garden! THG is MSU's 3-acre, certified organic campus farm. 2015 will mark our 9th season, and we are looking forward to a field full of crops, teaching growing principles to the next generation of farmers, and your involvement!

What is a CSA?

A CSA (community supported agriculture) membership is a mutually beneficial relationship between small farms and community members. A member helps support a farm in the beginning of the season when funds are low by paying upfront for a summer's worth of produce. The farm is then able to financially sustain itself in the early season through harvest. ***As a member***, you will receive a weekly supply of vegetables from our farm, and as much enthusiasm as the farm managers and interns can offer!



How it works!

This year we will continue offering some new and old options from last season. If you have any questions, recommendations, or need assistance filling out your member agreement, don't hesitate to contact THG's **Marketing Manager Kara Landolfi** via email @ townesharvet@gmail.com or phone @ [406-396-0873](tel:406-396-0873).

Appendix – CSA Information Packet cont.

CSA Membership Options

***All members** – Along with your weekly vegetables, we will provide you with a THG reusable bag your first visit, which we will ask you to bring back each week to carry your vegetables home in. We will also send you a weekly, online newsletter describing your share of the harvest and recipes to help utilize your veggies! As a member, you will be the first to be informed about exciting events and any additional produce bundles for sale towards the end of the season. Finally, you will be respected and shown a season's worth of gratitude for supporting Towne's Harvest Garden through yet another year!*

- ♦ **Full Season Share** (18 weeks [20 week equivalent] May 27-September 23 - Wednesday farm pickup 4-6:30pm)
\$540 (\$10 discount!)

This share combines the Spring Greens Share and Summer Share, along with a discount. This year, ***the last two weeks of distribution will be doubled in size.*** We are going to load you up with storage crops during these final two weeks, so you don't have to make more trips to the farm than necessary! You will still receive the same monetary value of produce as if it were a 20 week CSA, but the last couple weeks you will receive double the normal weekly amount.

- ♦ **Spring Greens Share** (6 weeks May 27-July 1 - Wednesday farm pickup 4-6:30pm)
\$165 *Limited Supply - only 25 shares available!*

This share provides 25 lucky members with pre-season produce along with those ever-desirable fresh farm eggs! A variety of greens will fill your refrigerator drawers each week, accompanied by herbs, ½-1 dozen farm-raised chicken eggs, and any additional early season vegetables and fruits that we are able to offer. Start your summer off right!

- ♦ **Summer Share** (12 weeks [14 week equivalent] July 8-September 23 - Wednesday farm pickup 4-6:30pm)
\$385

This is our normal summertime share (with a bit of a tweak), which will include all of the crops we have planted, with more variety as summer progresses! Each week you will visit the farm and pick out your specific bundle of vegetables in our barn, supplying produce for an average family of 2-4 people. Knowledgeable MSU students and interns will be there to answer all of your questions. This year, ***the last two weeks of distribution will be doubled in size.*** We are going to load you up with storage crops during these final two weeks, so you don't have to make more trips to the farm than necessary! You will still receive the same monetary value of produce as if it were a 14 week CSA, but the last couple weeks you will receive double the normal weekly amount.

Additional Shares Continue on the Next Page

Page 2 of 4

Appendix – CSA Information Packet cont.

- ♦ **Summer Share Convenience Option** (12 weeks July 9-September 24 *Thursday MSU campus pickup outside the SUB, by the Noodle on 7th and Grant 3-6pm*)
\$415 **Continued from last year**

This option provides the same produce as our Summer Share, but is delivered to the MSU campus for those who cannot get away or have busy Wednesday night schedules. The increased price represents additional time, fuel and packaging costs associated with the drop-off. Contact the Marketing Manager Kara to determine if additional accommodations can be made.

- ♦ **Full Season Convenience Share** (18 weeks May 28-September 24 *Thursday MSU campus pickup outside the SUB, by the Noodle on 7th and Grant 3-6pm*)
\$580 (\$10 discount).

This is a combination of our Spring and Summer Shares, but delivered to campus. Actually, the first 6 weeks will be delivered *right to your office!* After that, you can join us at the Campus Farm Stand on Thursdays to pick up the remaining 12 shares.

- ♦ **Garden Starter** (One time pickup –Friday May 29 – farm pickup)
\$55 *Limited Supply – only 40 shares available!*

We are continuing this package from last year, with some revisions. We will provide ~25 valuable transplants along with ~8 packages of seeds. There will be enough starts and seeds to fill a plot of land or raised bed area of approximately 10'x16'. Included will be instructions on how to plant and maintain your garden throughout the summer. Plant starts will include tomatoes, peppers, basil, broccoli, and onions. Seeds packets will include squash, zucchini, cucumber, spinach, carrots, beans, peas and lettuce. Starts will be hardened off and ready to plant, weather permitting! All seeds, starts and soil will be organic.

- ♦ **Student Summer CSA Share** (12 weeks [14 week equivalent] July 8-September 23 - *Wednesday farm pickup 4-6:30pm*)
\$300

This discounted share is designated for STUDENTS ONLY. A current student ID is required. This is the same as the Summer Share. As students, this share may be split among housemates to further reduce costs. We sincerely wish to increase student veggie consumption, so tell all the students you know!

- ♦ **Donations** (donation checks may be post-dated)

For every \$25 you donate to support THG, you will receive \$5 in THG Market Bucks, eligible for redemption at any of our farm stand markets.

Donors offering \$100 will also receive a THG hat of their choice, along with \$20 in market bucks.

Tax-deductible donations can be made through the MSU Alumni Foundation.

Contact Sofie Malinowski: sofie.malinowski@msuaf.org.

- ♦ **Additional late season and storage shares** will be offered towards the end of the season, depending on availability and productivity. Check back with THG if you are interested later in the season. We already appreciate your continued interest!

Appendix – CSA Information Packet cont.

MAP TO TOWNE'S HARVEST:

Directions: From Main St. turn south on 19th Ave, turn right on Garfield, turn left at the MSU Horticulture sign, drive down the dirt road and Towne's Harvest Garden is on the left. CSA pickup is in the big building.

<p>Spring Greens Share 6 weeks May 27-July 1 Wednesday farm pickup 4-6:30pm</p>	<p>Garden Starter Package Friday May 29 farm pickup</p>
<p>Summer Share 12 weeks July 8-September 23 Wednesday farm pickup 4-6:30pm</p>	<p>Summer Share - Convenience 12 weeks July 9-September 24 Thursday campus pickup 3-6pm</p>
<p>Full Season Share 18 weeks May 27-September 23 Wednesday farm pickup 4-6:30pm</p>	<p>Full Season Share - Convenience 18 weeks May 28-September 24 Thursday campus pickup 3-6pm</p>

◆ **Campus Farm Stand**
For the remainder of your vegetable needs visit our farm stand on Thursdays from 3-6pm, July 16 – October 1. Location is south of the MSU SUB, at the entrance of the bus loop on 7th and Grant.

Page 4 of 4

Appendix – CSA Information Packet cont.

Member Agreement Application



Name(s):

Address:

Phone:

e-mail (please print legibly):

Include all emails to which the weekly newsletter should be sent.

Have you been a CSA member before? Where?

Please select which options you wish to support.

- Full Season Share - \$540
- Spring Greens Share - \$165
- Summer Share - \$385
- Summer Share Convenience Option - \$415
- Full Season Convenience Option - \$580
- STUDENTS ONLY Summer Share - \$300
- Garden Starter - \$55
- Donation (indicate amount) - \$_____

Please enclose a check payable to **MSU – Towne's Harvest Garden**

Mail check and application to:

**Towne's Harvest Garden
Montana State University/HHD
121 PE Complex
Bozeman, MT 59717**

Or sign up and pay online via PayPal @ TownesHarvest.montana.edu

Please send additional questions and concerns to: THG Marketing Manager Kara Landolfi: townes.harvest@gmail.com or 406-396-0873.

Thank you for your support.
The Towne's Harvest Crew can't wait to see you this season!

Appendix – CSA Flyer



TOWNE'S HARVEST 2015 CSA'S ON SALE NOW!

THG is MSU's Student Learning Organic Vegetable Farm!

Pre-purchase your weekly box of vegetables for the summer now. Your support helps this educational farm run, and provides a summer of on-farm learning to students in Sustainable Food and Bioenergy Systems!

- Towne's Harvest Garden CSA
Townesharvest.montana.edu
- Towne's Harvest Garden CSA
Townesharvest.montana.edu
- Towne's Harvest Garden CSA
Townesharvest.montana.edu
- Towne's Harvest Garden CSA
Townesharvest.montana.edu
- Towne's Harvest Garden CSA
Townesharvest.montana.edu
- Towne's Harvest Garden CSA
Townesharvest.montana.edu
- Towne's Harvest Garden CSA
Townesharvest.montana.edu
- Towne's Harvest Garden CSA
Townesharvest.montana.edu
- Towne's Harvest Garden CSA
Townesharvest.montana.edu
- Towne's Harvest Garden CSA
Townesharvest.montana.edu
- Towne's Harvest Garden CSA
Townesharvest.montana.edu
- Towne's Harvest Garden CSA
Townesharvest.montana.edu
- Towne's Harvest Garden CSA
Townesharvest.montana.edu
- Towne's Harvest Garden CSA
Townesharvest.montana.edu



Full Season Share
 18 Weeks (2 double weeks)
\$540 (\$10 savings)
 *Convenience Option \$580

Summer Share
 12 Weeks (2 double weeks)
\$385 (Students \$300)
 *Convenience Option \$415

Spring Greens Share
 6 Weeks
\$165 (*Limited supply*)

Garden Starter
 Veggie Starts & Seeds
\$55 (*Limited supply*)

More info @
TownesHarvest.montana.edu
townes.harvest@gmail.com

Regular Shares will have Wednesday farm pickups from 4-6:30pm @ MSU Horticulture Farm off 19th and Garfield.
 *Convenience Shares will be delivered to the MSU campus on Thursdays from 3-6pm South of the SUB.

Appendix – Student Summer CSA Flyer

Now offering a Student Summer CSA Share – only \$300 for 14 weeks!
(\$85 discount!)

 MONTANA
CERTIFIED ORGANIC
DEPARTMENT OF AGRICULTURE

for more info
<http://TownesHarvest.montana.edu>

 TOWNE'S HARVEST GARDEN
Locally, Sustainably and Educationally Grown

Split between 2 students - \$150 each, only \$10/week
Split between 3 students - \$100 each, only \$7/week
Split between 4 students - \$75 each, only \$5/week

That's 14 weeks of organically and locally produced vegetables,
grown by fellow bobcats, how neat is that!?

Appendix – Campus Farm Stand Flyer

Campus Farm Stand

Thursdays 3-6pm



By the SUB bus loop on 7th and Grant
July 9 – October 1

Accepting Cash, Check, Credit/Debit, WIC Coupons



Produce grown by MSU students!



<http://TownesHarvest.montana.edu> • Townes.Harvest@gmail.com

Appendix – CFT Flyer

Community Food Truck

Affordable, Farm Fresh Produce

- 2015 Schedule -



TUESDAYS July 14 – September 22

Belgrade Clarkin Park
in front of Lee and Dad's
Tuesdays 2-4pm

MSU Family and Graduate Housing
Outside the Office
Tuesdays 5-7pm
During Free Bread Night



*We Gladly Accept WIC Farmer's Market Coupons



Questions? Email townes.harvest@gmail.com or call Kara 406-396-0873

Produce grown by students at Towne's Harvest Garden, MSU

www.TownesHarvest.montana.edu



Appendix – Garden Starter Info

garden starter share



With adequate soil fertility, just add water! Happy gardening!

Tomatoes

A random assortment of varieties including Big Beef, Black Cherry, Striped German, and Green Zebra. After risk of frost plant root stock 1" under the soil, 12" apart.

Peppers

A variety of peppers including mild Yankee Bell, and hot Havasu and Antohi Romanian. After risk of frost plant deeper than the root stock, 8" apart.

Broccoli

A veggie we all know and love! Harvest before head begins to bud out. Plant 8" apart. Continue to harvest secondary shoots to encourage production.

Basil

Very fragrant and flavorful herb. After risk of frost plant 8" apart. Harvest top leaves to encourage additional growth. Very sensitive to cold temperatures.

Parsley

Freshen up meals with this vibrant herb. Plant 8" apart. Very cold tolerant, continue to harvest past frosts.

Onions

Yellow storage onions. Plant 6" apart, 1" under the soil.

Squash

Yellow flavorful straight neck squash. Plant 12-24" apart, 1" deep. Extras make friends with neighbors!

Zucchini

Green zucchini ready to produce. Plant 12-24" apart.

Cucumber

Green slicing cucumbers. Plant 12-24" apart.

Snap Peas

Plant 2" apart, 1/2" deep. Harvest peas as they are ready, but good luck bringing them inside, they often turn into garden snacks!

Green Beans

Plant 2" apart, 1" deep. Harvest beans as they are ready, look under those leaves!

Carrots

These seeds are pelleted for more accurate planting. Plant 1" apart, 1/2" deep. Carrots don't germinate for a couple weeks, so be sure to keep the weeds at bay.

Spinach

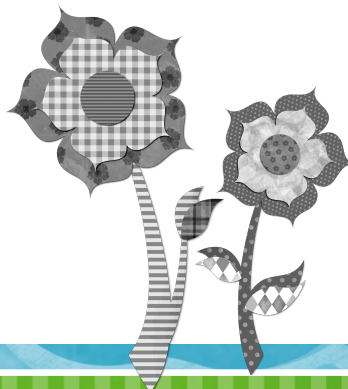
Plant 1" apart, 1/2" deep. Harvest leaves when full size, before bolting. Continue to harvest until plant stops producing.

Mixed Salad Greens

A mixture of leafy greens. Sprinkle seeds, and lightly cover with soil. Continual clipping of greens should allow for multiple harvests.

Thank you for your support this season by purchasing a Garden Starter Share from MSU's Towne's Harvest Garden! Your continual participation allows THG to teach students organic farming practices, to become the next generation of food producers! Be sure to stop by our Campus Farm Stand July 9 - October 1 on Thursdays 3-6pm for the remainder of your vegetable needs!

Thanks & see you next year! ~ Kara, Chaz and the THG crew



Appendix – Sample CSA Newsletter

Summer CSA Week 1

July 8, 2015

+
Towne's Harvest Garden
 Your support allows Montana State University's student-learning, organic vegetable farm to run. Thank you!



- This Week's Bounty**
- Beets**
 - Chard**
 - Arugula**
 (Spicy green for salads)
 - Mizuna**
 (Slight horseradish flavored green, chop greens and stems into bite-sized pieces)
 - Spinach**
 - Head Lettuce**
 - Green Onions**
 - Garlic Scapes**
 (mild garlic flavor, chop up or grill/sauté whole or cut into pieces)
 - Basil**
 - Farm Eggs – For Sale**

+
This Issue:

- Featured Recipes.....2
- Student Slot.....3
- Meet the Managers..4

The start to a new season!

Towne's Harvest Garden is in its 9th season, and so far off to a good start! The warm weather has really brought the farm to life this summer. This year we have 10 practicum students working at the farm, from the Sustainable Food and Bioenergy Systems degree program. So far they have been enjoying themselves, feel free to ask what they have learned thus far! These students will one day be producing, distributing, or cooking your food - so start getting to know

them now! To promote this, each week we will dedicate a slot to a student. This issue will also include introductions to the 2015 Production and Marketing Managers at THG. The next few weeks of CSA will be manned by MSU's Culinary Marketing: Farm to Table Class, so even more faces to get to know!

Best,
 Kara and the THG crew



Appendix – Sample CSA Newsletter Cont.

This week's featured recipe ideas!

July 8, 2015



Scape Pesto

- Bag of basil
- 1-2 garlic scapes
- 2 T parmesan cheese
- 2 T oil
- 3 T walnuts
- Pinch of salt
- Splash of lemon juice

Combine ingredients in a food processor or blender. Blend into a pesto consistency. Serve on pizza, pasta or toast.

How do I go about using my produce?

My biggest recommendation is to experiment. Just try things. Try produce raw, try it cooked. You are the best judge as to what you like and want to eat. Our crew of practicum students will be more than happy to answer questions, but don't forget to ask friends, the internet, even your mom (she does know best).

A great resource I strongly encourage you all to explore is www.FoodGawker.com This site compiles scrumptious recipes with appetizing 'foodography'.



Most produce will keep longest in plastic bags in the fridge. If you are unsure on how to store food each week, ask us and we will give you our best recommendations.

I hope this summer you all can explore, leave your comfort zones, and enjoy truly fresh and tasty food.

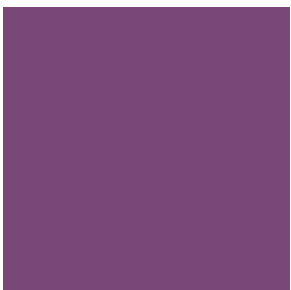


Recipe Ideas

- + Strawberry and romaine salad with creamy poppy seed dressing and toasted chopped almonds
- + Sautéed chard or spinach
- + Chopped mizuna on tacos or burritos
- + Romaine leaf tacos
- + Quiche with green onions and sautéed greens
- + Beet, arugula, feta cheese, and walnut salad

Appendix – Sample CSA Newsletter Cont.

July 8, 2015



Student Slot

Thomas Ward Jr.

Hometown: Libertyville, Illinois

Tommy came to Montana to experience the state's phenomenal skiing and fishing opportunities. He originates from a traditional Midwest farm. In high school, Tommy became interested in sustainability and how it is affected by the choices you make. He is now enrolled in MSU's Sustainable Food and Bioenergy Systems program.

Tommy has lots of family, some of whom work in agriculture. His

grandmother owns a farm and wants to see it transformed into a more sustainable farm entity. Though he has considered this opportunity, Tommy may first work for his uncle's fish farm to learn that system. In the end, Tommy hopes to reside in a place like Montana.

Favorite Food: Rib eye steak with mashed potatoes and caramelized onions.

Appendix – Sample CSA Newsletter Cont.

July 8, 2015



Meet the Managers

Chaz Holt

Production Manager

Home state: Georgia

Chaz grew up in a family of farmers, but saw the profitability and accessibility of farming dwindle before his eyes. He was determined to grow food, and has made his dream a reality. Chaz has lived in Montana for 15 years, and been our farmer at THG for the past 6 seasons. He has also assisted other local farmers in the creation of their businesses. It's hard to not find Chaz smiling away in the outdoors, particularly with his fabulous wife and three adorable children.

Kara Landolfi

Marketing and Operations Manager

Hometown: Missoula, MT

This is Kara's second season coordinating THG's markets and CSA program. She is also pursuing a graduate degree at MSU in Sustainable Food Systems. Kara strives to procure as much food as she can through hunting, gardening and foraging, all of which she has learned since moving to Bozeman. Her favorite activities include hiking, backpacking, skiing, hunting, biking, and simply enjoying Montana's abundant beauty with her adventurous partner.

Appendix – PSA's

KGLT PSA submission beginning of April

Summer is almost here, and that means fresh produce from Towne's Harvest Garden! Pre-purchase your CSA share of organic vegetables from MSU's student farm before they're gone! We are offering Spring, Summer, and Full Season CSA's – there's even a student discount! We also have Garden Starter Packages. Make your summer food an experience by becoming a member of Towne's Harvest Garden. [For more info check out TownesHarvest.Montana.Edu](http://TownesHarvest.Montana.Edu) or [406-396-0873](tel:406-396-0873).

Beginning of May on Craigslist

Garden Starter Package - organic plants and seeds - \$55 (Bozeman -)

Bozeman's student farm is selling packages of organic plants and seeds for home gardeners! Be sure to look for more information at <http://townesharvest.montana.edu/csa.html>

Garden Start Package

(One time pickup --Friday May 29 -- farm pickup off 19th and Garfield at the MSU Horticulture Farm)

\$55 Limited Supply -- only 40 shares available!

You sign up online through PayPal or by sending in a check to the address on the website.

We are continuing this package from last year, with some revisions. We will provide ~25 valuable transplants along with ~8 packages of seeds. There will be enough starts and seeds to fill a plot of land or raised bed area of approximately 10'x16'. Included will be instructions on how to plant and maintain your garden throughout the summer. Plant starts will include tomatoes, peppers, basil, broccoli, and onions. Seeds packets will include squash, zucchini, cucumber, spinach, carrots, beans, peas and lettuce. Starts will be hardened off and ready to plant, weather permitting! All seeds, starts and soil are organic.

Bozeman Magazine event [submission for Campus Farm Stand](#) ~~click repeat~~ weekly

The community is welcome to join Towne's Harvest Garden at their Campus Farm Stand on the MSU Campus. Located on 7th and Grant, at the entrance of the bus loop. We offer certified organic vegetables grown by the students themselves at competitive prices! [Thursdays 3-6pm July through September.](#)

<http://townesharvest.montana.edu>

MSU [Events](#) ask them to repeat weekly &

[BozemanEvents.Net](#) you have to submit each week separately

The community is welcome to join Towne's Harvest Garden at their Campus Farm Stand on the MSU Campus. Located on 7th and Grant, at the entrance of the bus loop. We offer certified organic vegetables grown by MSU students at competitive prices! Every Thursday from 3-6pm running July 9 -

Appendix – PSA's Cont.

October 1.

For more information on Towne's Harvest Garden, visit <http://townesharvest.montana.edu>

Email townes.harvest@gmail.com or call the Marketing Manager: Kara 406-396-0873

Sent to KGLT PSA 2 weeks before CFS stand start

The community is welcome to join Towne's Harvest Garden at their Campus Farm Stand on the MSU Campus. Located on 7th and Grant, at the entrance of the bus loop. We offer certified organic vegetables grown by MSU students at competitive prices! Every Thursday from 3-6pm running July 9 - October 1.

For more information on Towne's Harvest Garden, visit <http://townesharvest.montana.edu>

Email townes.harvest@gmail.com or call the Marketing Manager: Kara 406-396-0873

Submit to MSU Announcements 2 weeks before CFS start

Short: Faculty, staff, students and the community are welcome to join Towne's Harvest Garden at their Campus Farm Stand on the MSU Campus. Located on 7th and Grant, at the entrance of the bus loop. We offer certified organic vegetables grown by MSU students at competitive prices! Every Thursday from 3-6pm running July 9 - October 1.

Long: Faculty, staff, students and the community are welcome to join Towne's Harvest Garden at their Campus Farm Stand on the MSU Campus. Located on 7th and Grant, at the entrance of the bus loop. We offer certified organic vegetables grown by MSU students at competitive prices! Every Thursday from 3-6pm running July 9 - October 1.

This is Towne's 9th growing season. Join us each Thursday to see the progression of crops we have to offer. Students can answer all your vegetable and recipe related questions; take a break and swing on by!

For more information on Towne's Harvest Garden, visit <http://townesharvest.montana.edu>
Email townes.harvest@gmail.com or call the Marketing Manager: Kara 406-396-0873

Email Bobcat Bulletin